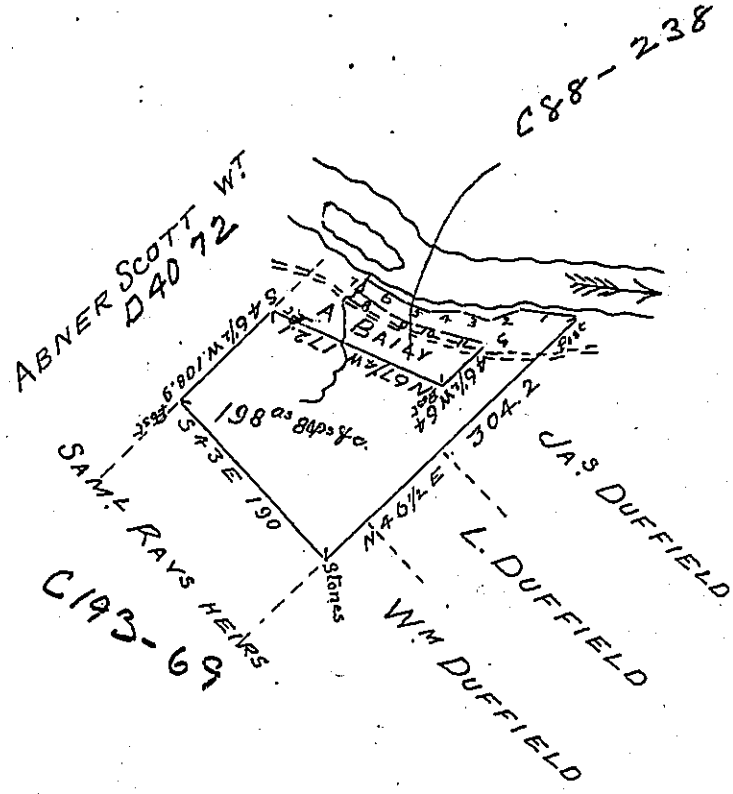


- Courses and distances up French Creek to run up run to road down road to post and Stones -
- Nº1 N 82 1/2 W. 48.8
 - " 2 S 65 1/4 W. 26.6
 - " 3 N 61 1/4 W. 22.4
 - " 4 S 87 1/2 W. 26
 - " 5 N 68 1/2 W. 22.8
 - " 6 N 57 1/4 W. 38.3 post in run
 - " 7 S 33 1/2 W. 6.4 Post by road.
 - " 8 S 51 1/4 E. 29.6 W. Walnut
 - " 9 S 62 3/4 E. 26.2 W. Walnut
 - " 10 S 72 1/2 E. 23 W. Walnut
 - " 11 S 76 1/4 E. 42.2 Post & Stones



Draft of a tract of land situate in French Creek Township, Venango County, west of the Allegheny River, South of, and adjoining French Creek. Surveyed 12th November 1851 for Henry Bowman on improvement and Settlement.

Matthew Riddle Ds
 To J. Porter Brawley Esqr
 Sur Genl

IN TESTIMONY that the above is a copy of the original remaining on file in the Department of Internal Affairs of Pennsylvania, made conformably to an Act of Assembly approved the 16th day of February, 1833, I have hereunto set my Hand and caused the Seal of said Department to be affixed at Harrisburg, this eighteenth day of January 1904.

Loce J Brown
 Secretary of Internal Affairs.